

Chapter 4 Display Text


There are four methods to play a text program: in a text window; in a single line text window; in a static text window; import text file in file window.

Note :

1. To edit a single line moving text, please use single line text window. (Details refer to 4.2)
2. To edit multi-line text or static text, please use static text window. (Details refer to 4.3)
3. To import WORD document, please save *.doc file as *.rtf file, then use file window. (Details refer to 4.4)
4. To import TXT, please use file window. (Details refer to 4.4)
5. In addition to select by drop-down box, you can input any font size by manual.

4.1 Play in Text window

4.1.1 Create a new window

Click on “new window” button  then select “Text window”, as shown in image 4-1.

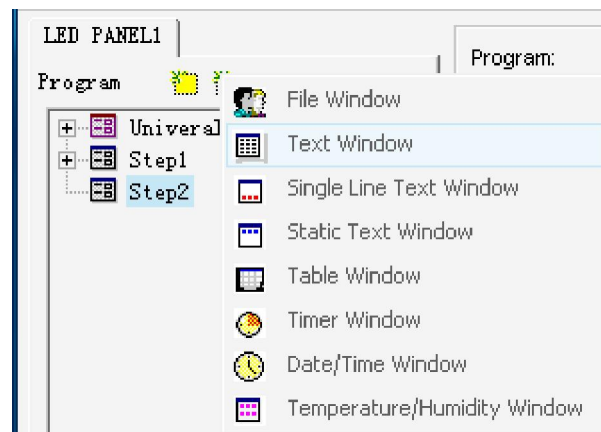


Figure 4-1

4.1.2 Setup Text Window

As shown in image 4-2, the upper part is for setting up program properties.

Name: program's name

Frame: choose frame and color

Starting point X: x-coordinate of the starting point

Starting point Y: y-coordinate of the starting point

Width: setup program's width

Height: setup program's height

Lock: lock this program to prevent it from moving

Background color: setup background color

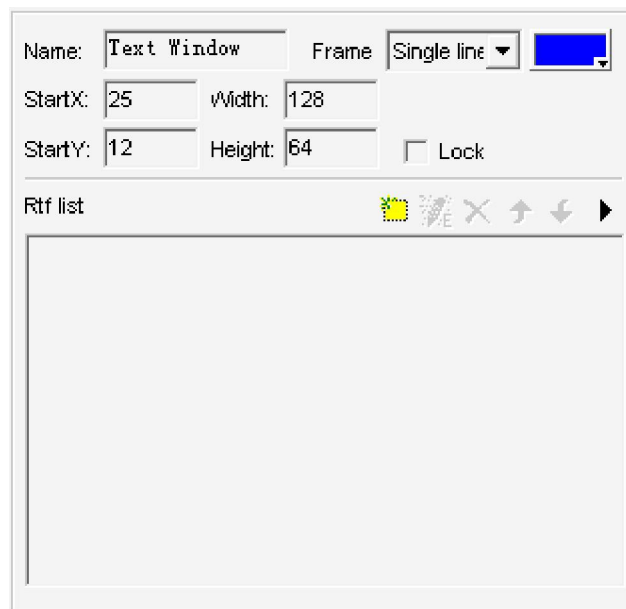



Figure 4-2

4.1.3 Import and Edit Text

As shown in image 4-2, the lower part is for editing. After clicking on the “add text” button , a “Text Edit” dialog box will appear as shown in the image 4-3 in below. You can input or copy text in this edit box. Besides, there are some options for you, such as Background, Font, Action, Speed, and Stay, etc.

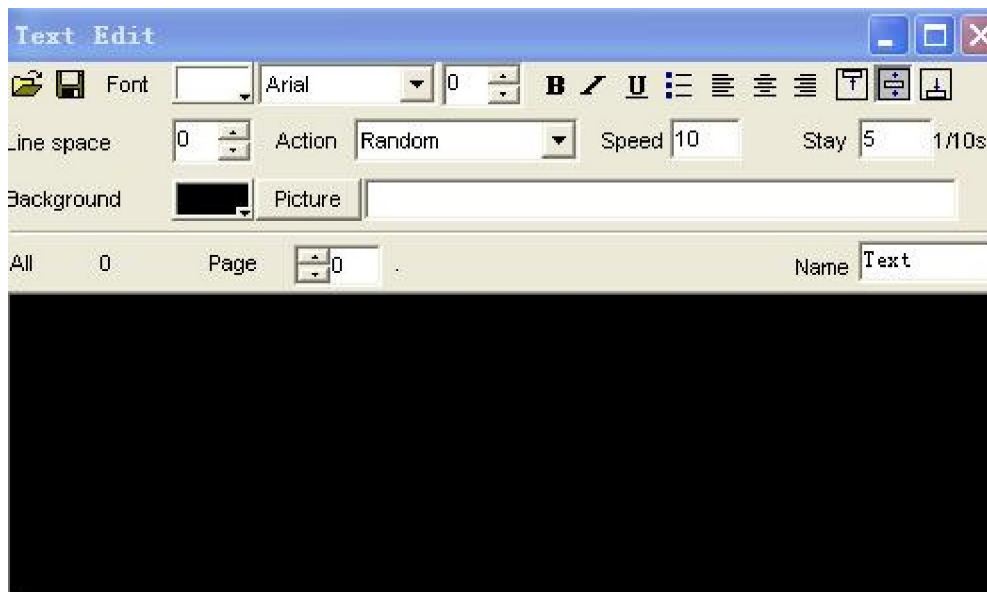


Figure 4-3

Close the “Text Edit” dialog box after editing. Now the Text will appear in the list, as shown in image 4-4.

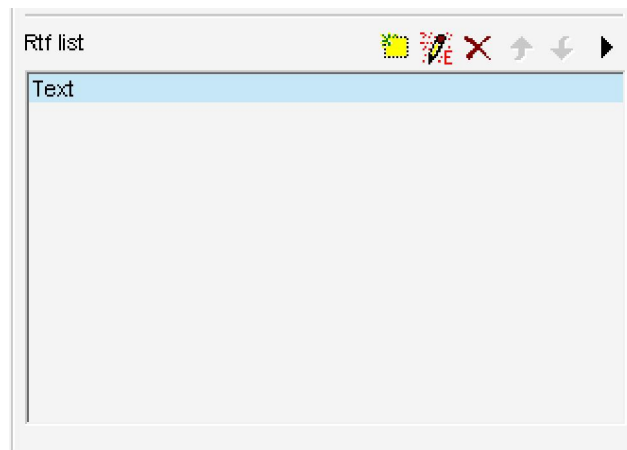



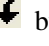




Figure 4-4

If you want to modify the texts, just simply selected it and then click on the button . An edit box as shown in image 4-3 will appear and you can edit it. To delete the texts, click on  button. To change the playing order, click on   buttons. Or you can preview it by clicking on the button .

4.2 Play in Single Line Text window

This window is only for displaying single line sliding captions, such as greeting words, notification, etc. Also, you can add a logo picture before the text, or import a picture as background.

4.2.1 Create a new Single Line Text Window

Click on “new window” button  then select “Single Line Text window”, as shown in image 4-5 and image 4-6.

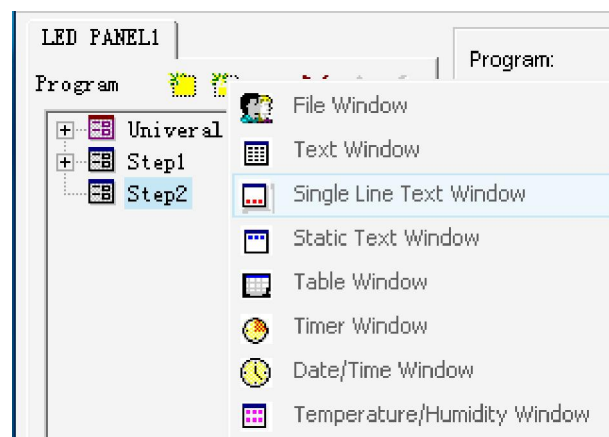


Figure 4-5

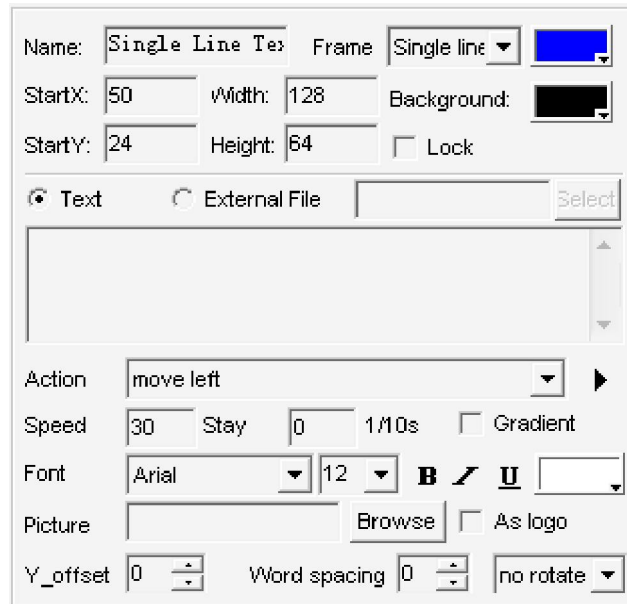


Figure 4-6

4.2.2 Setup Single Line Text window

As shown in image 4-6, the upper part is for setting up program properties. There are two ways to input texts, one is opening from external documents and another is directly inputting to the edit box.

Open from external documents

Select “External file” then click on button Select to open files, as shown in image 4-7. You can set up Action, Background, Font and Stay.

Input in the edit box

Select the “Text” and then type in the box below, as shown in Image 4-7, you can also set up the Action, Background Font and Stay.

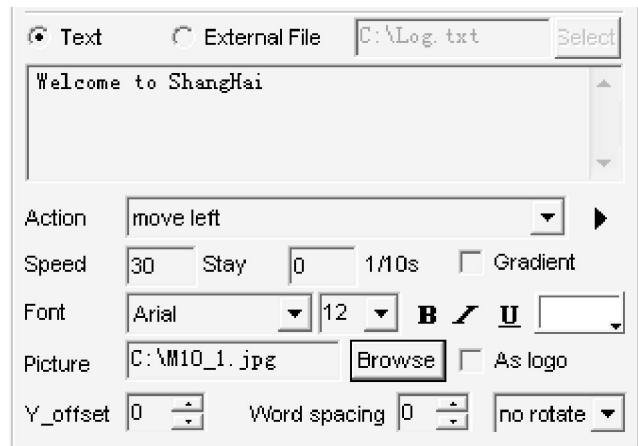
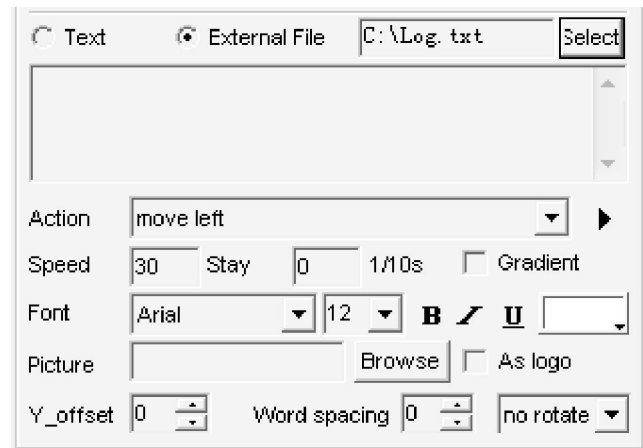


Figure 4-7

4.2.2.3 Colorful effects

Please choose the style that you want in the drop-down list, as shown in image 4-8 in below:



Image 4-8

Please see the effect before and after, as shown in image 4-9 in below:

Welcome to Shanghai



Image 4-9

4.2.2.4 Add Logo or background picture

Please see image 4-10 in below:



Image 4-10

4.2.2.5 Notes

You can adjust words up and down by “Y-offset”, as shown in image 4-11 in below:



Image 4-11

You can adjust distance between each word by “Word-space”, as shown in image 4-12 in below:

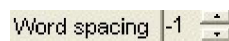


Image 4-11

You can rotate words direction by “Rotate”, especially for long strip sign, as shown in image 4-13 in below:

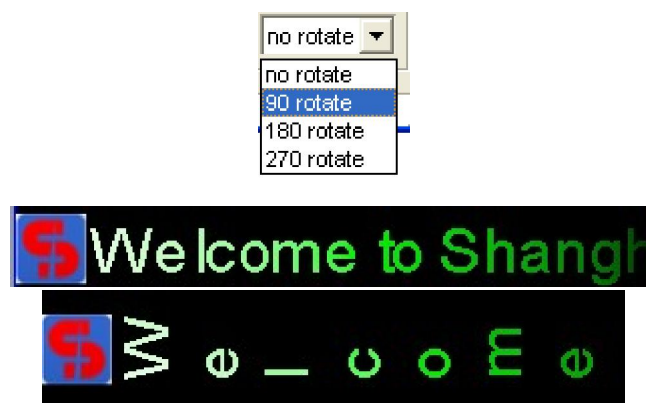


Image 4-13

4.2.2.6 Special effects of single-line text

You can move words up, down, left and right, as shown in image 4-14 in below:

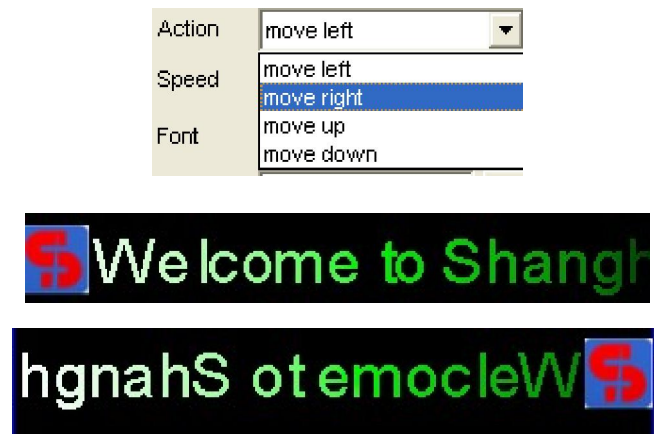



Image 4-14

4.3 Play in Static Text window

This window is for playing static texts.

4.3.1 Create a new Static Text Window

Click on the “new window” button , then select “Static Text window”, as shown in image 4-15 and 4-16.

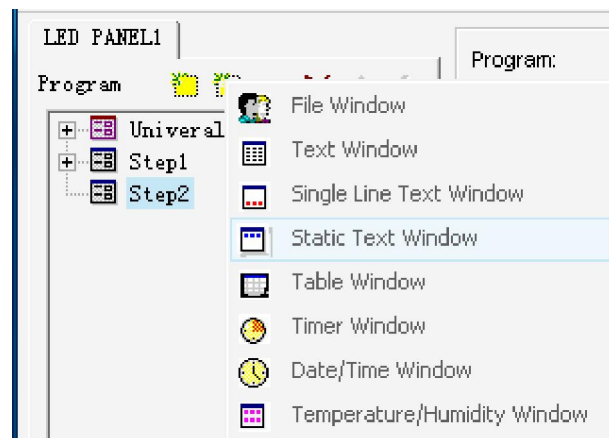


Figure 4-15

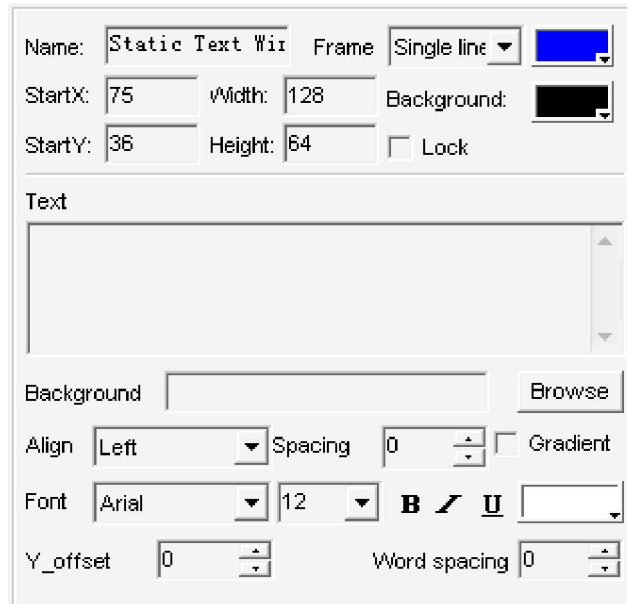


Figure 4-16


4.3.2 Setup the static text window

As shown in image 4-16, the upper part is for setting up program properties. Type in the edit box and choose options in below, like: Align, Background picture, spacing and Font, etc.

Note: you can also choose Style.

4.4 Play text file in File Window

4.4.1 Create a new File Window

Click on the “New Window” button , select “File Window” (as shown in image 4-17), as shown in image 4-18.

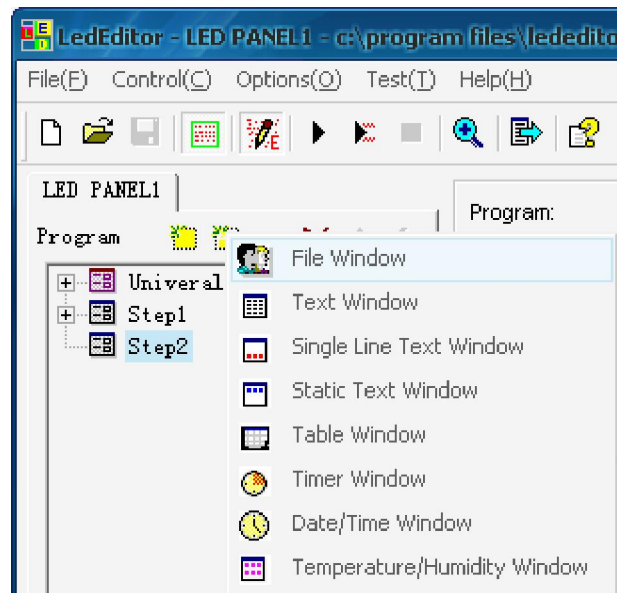


Figure 4-17

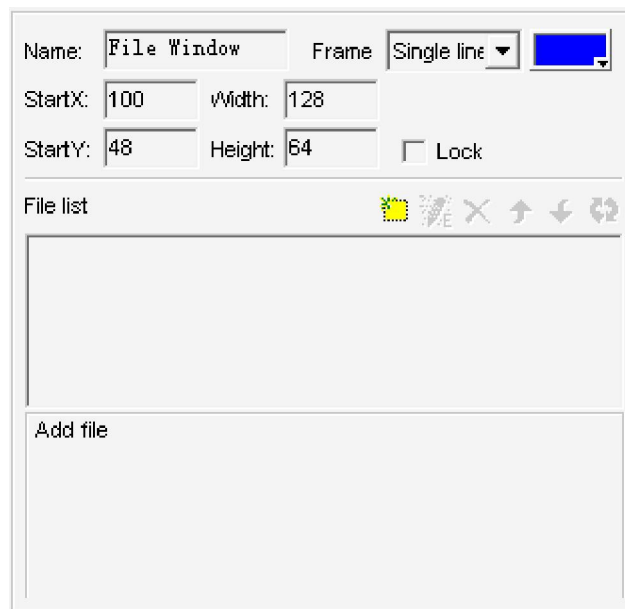


Figure 4-18

4.4.2 Setup File Window

As shown in image 4-18, the upper part is for setting up program properties.

Name: program's name

Frame: choose frame and color

Starting point X: x-coordinate of the starting point


Starting point Y: y-coordinate of the starting point

Width: set up program's width

Height: set up program's height

Lock: lock program to prevent it from moving

4.4.3 Open files

Click on “add file” button , (in lower part of image 4-18), an open file dialog box will appear. All supported format has been shown in the drop-down box. Select WORD File(*.rtf) or Txt File(*.txt), choose the file that you want then click on “open”button to open it, as shown in image 4-19.

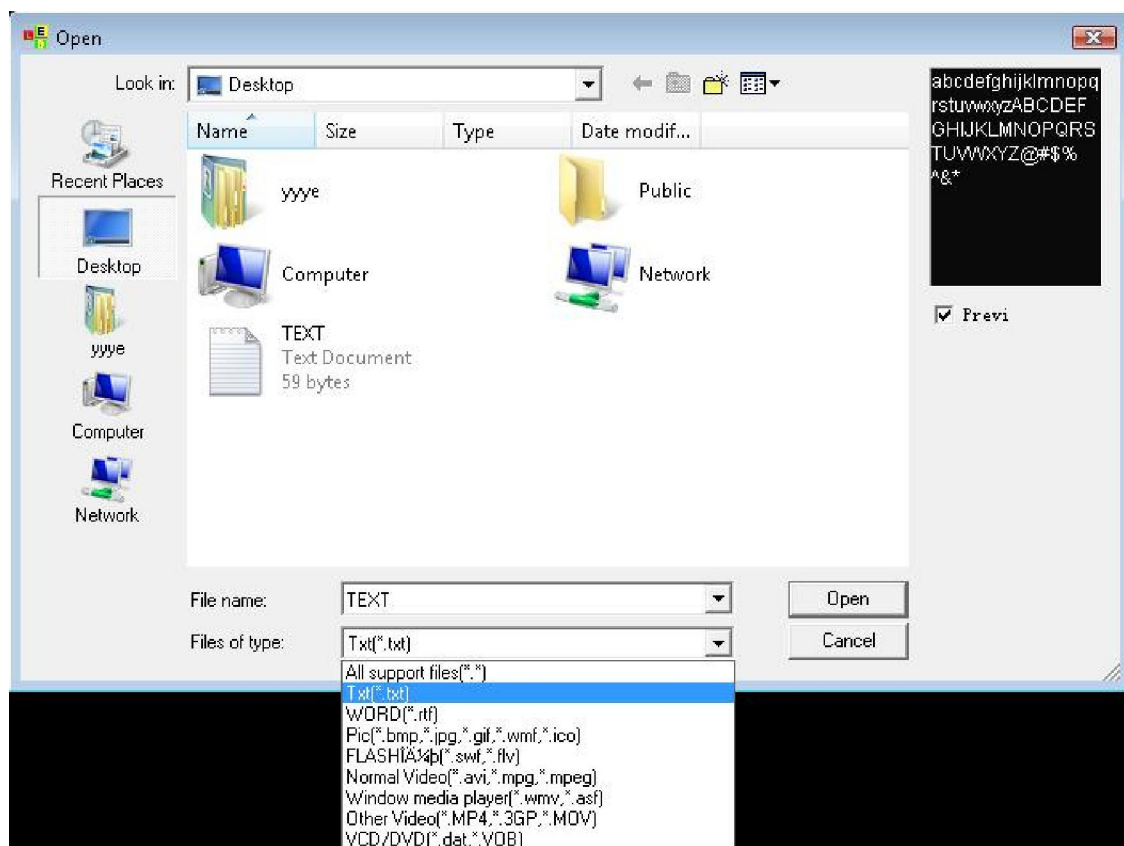


Figure 4-19

Now you have added the file then choose options in, as shown in image 4-20. Options include Background color, Font, Action, and Stay, etc.

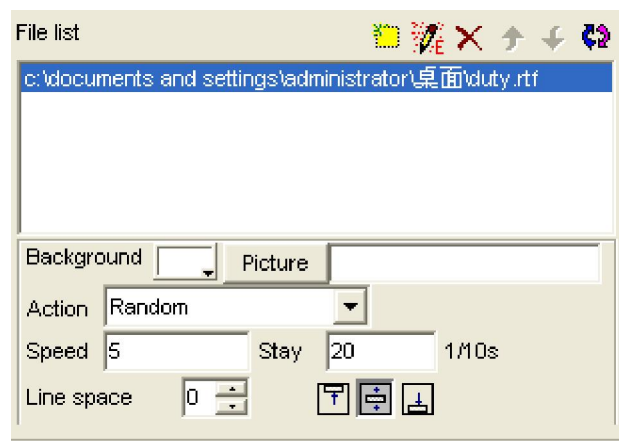


Figure 4-20